

south beach skin solutions®

Deluxe Instant Results In-House Service

Approx. 15-20
Minutes

South Beach Skin Solutions is safe, natural and easy to use. Our Instant Results System is uniquely combined to deliver the immediate brightening along with the long term results that will give a lasting look. Please follow the approved protocol below. **DO NOT COMBINE WITH OTHER PRODUCTS.**

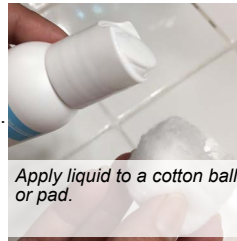
BEFORE YOU BEGIN - CONSULTING WITH THE CLIENT

Before you begin, you should take a few minutes to consult with your client. Make sure that they do not have any skin problems, known allergies or irritations from hair removal procedures. Explain the process, what to expect overall and each step is being performed. Be prepared to answer any questions or concerns about the process and products. It is important to educate the client on aftercare & take-home products to maximize their results.

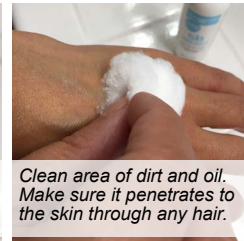
STEP 1 - South Beach "No Sting" Skin Prep



DIRECTIONS: To be performed prior to any hair removal procedure such as waxing, sugaring, shaving, etc. Using a cotton ball or pad, apply a generous amount of the SB Pre Wax Skin Prep in a circular motion to the hair and skin. This will clean the skin and hair of dirt & oil for better wax adhesion. Make sure that the liquid penetrates into the skin thoroughly for about 30 seconds. This will significantly help take the "sting" out of hair removal without potential side effects. *All natural, no benzocaine or lidocaine.*



Apply liquid to a cotton ball or pad.



Clean area of dirt and oil. Make sure it penetrates to the skin through any hair.



Allow to dry (60-90 secs). Reapply as needed.

STEP 2 - South Beach Skin Brightening Accelerating Wash



DIRECTIONS: Formulated to gently wash, exfoliate and instantly brighten the top layers of the skin. To start, lightly dampen a cotton pad with warm water. Apply a dime-sized amount of the SB Accelerating Wash to the pad. Wash the area using a gentle, circular motion (about 30-40 seconds). Do NOT scrub harshly. Rinse skin completely. Repeat process. Pat dry. Allow skin to dry before the next step. You should see an immediate brightening effect. *All natural, aloe-based. No fragrances, dyes or alcohol.*



Lightly dampen a cotton pad using warm water. Squeeze out excess and apply Wash.



Wash area thoroughly but gently (about 30-40 secs). Do NOT scrub harshly.



Rinse thoroughly. Pat dry. Repeat. Do not leave on skin.

STEP 3 - South Beach for Ingrown Hairs



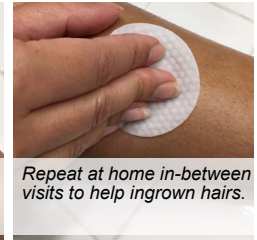
DIRECTIONS: Used to help prevent ingrown hairs and open pores to help SB Gel absorb into the skin. Salicylic-acid helps to further exfoliate, buff the skin and open pores to help prevent and eliminate any red bumps and ingrown hairs. Allow to penetrate and absorb into the skin. (30-60 seconds). TIP: Clients with ingrown hair problems can purchase take home version for use until next visit. *All natural, no alcohol or witch hazel. No sting or smell.*



Use a cotton pad to apply directly to the skin. Rub in a circular motion.



Allow the liquid to absorb into the skin (15 secs). Leave on skin damp.



Repeat at home in-between visits to help ingrown hairs.

STEP 4 - South Beach Gel for Sensitive Areas + SB Wand (Warm Setting + Red LED + Sonic)



DIRECTIONS: Fast absorbing gel formulated to quickly penetrate and block the formation of excess melanin in new skin cells. To start, apply directly to the desired area. Gently rub in a circular motion. Use SB Wand (**Warm setting #2-5 plus Red LED light and sonic massage**) to open pores and help product penetrate. Check with your client on the level of heat to make sure that they are comfortable. Always test that the level is not too hot. Increase or decrease as needed. Allow to absorb in and dry completely before going to the next step. Client should not feel sticky or wet. (30-60 seconds). *All natural, no hydroquinone, kojic acid or mercury.*



Apply directly to the desired area. A small, pea-sized amount will do.



Gently rub in a circular motion until fully absorbed. Use Wand (Warm #2-5, Red).



Allow to dry completely before next step.

STEP 5 - South Beach Soothing Lotion + SB Wand (Cool Setting + Blue LED + Sonic)



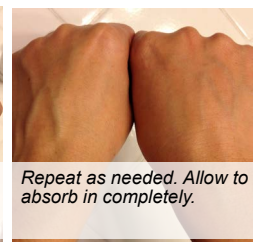
DIRECTIONS: Apply a small amount by massaging in a circular motion. Use the SB Wand (**Cool setting #2-5 plus Blue LED light and sonic massage**) to help calm the skin, reduce irritation and close pores. Check with your client on the temperature to make sure that they are comfortable. Always test that the level is not too cold. Increase or decrease as needed. Repeat as needed. Continued use helps regulate skin temperature and keeps the area cool to keep melanin from returning. Maintain use even after lightening results have been achieved to help preserve look. (30-60 seconds). *All natural, aloe-based. No fragrances, dyes or alcohol.*



Apply SB Soothing Lotion to the skin. A small pea-sized amount will do.



Gently rub in a circular motion until fully absorbed. Use Wand (Cool #2-5, Blue)



Repeat as needed. Allow to absorb in completely.

TAKE HOME - Continue Maintenance at Home In-Between Visits

DIRECTIONS: Client should continue using the take home products in-between visits according to the directions for best results. Either the SB Gel for Sensitive Areas ("Regular Strength") or the SB Instant Results Kit ("Extra Strength") plus other individual SB take home products for specific areas.

Any questions, call us at 305-395-7199 or email us at info@southbeachskinsolutions.com